

Nexon **K3.ev**

game — changer

Redefining Design, Comfort & Safety





game — changing design

A stunning new design that
commands attention.



smart digital DRLs

Make your presence felt through the signature DRLs with welcome and goodbye sequence and charging indicator.



smart digital X factor

The iconic X factor with a welcome and goodbye sequence lends a sleek digital look.



hidden rear wipers

Better coverage for better visibility.



digital dashboard

A dynamic digital dashboard that elevates your cabin experience.



R16 alloy wheels

Glide through with aero inserts on R16 alloy wheels.

smart digital steering wheel

Stylish 2-spoke back-lit steering wheel.



phygital control panel

Touch meets digital control.

smart digital shifter

Seamless drive selection for quick responsiveness.





game — changing innovation

Reimagine what your car can do.

V2V charging



Charge another EV, anywhere with vehicle-to-vehicle charging^{^^}.



V2L technology***

Power your gadgets with the power of your EV.



Reimagine your car as a power bank.



Never out of power to suit your lifestyle.



game — changing technology

The next big thing in tech is already here. Are you game?

31.24 cm cinematic touchscreen



An immersive, unparalleled
cinematic experience awaits you.



JBL cinematic sound system

Spatial, immersive JBL audio for a 360° 3D surround sound experience.

high quality speaker

9 high quality speakers including external sub-woofer.



audio modes

Multiple audio modes that enhance in-vehicle acoustic experience.

cinematic experience

An immersive experience like no other.



kids sleeping in back

Stay entertained without disturbing the kids.

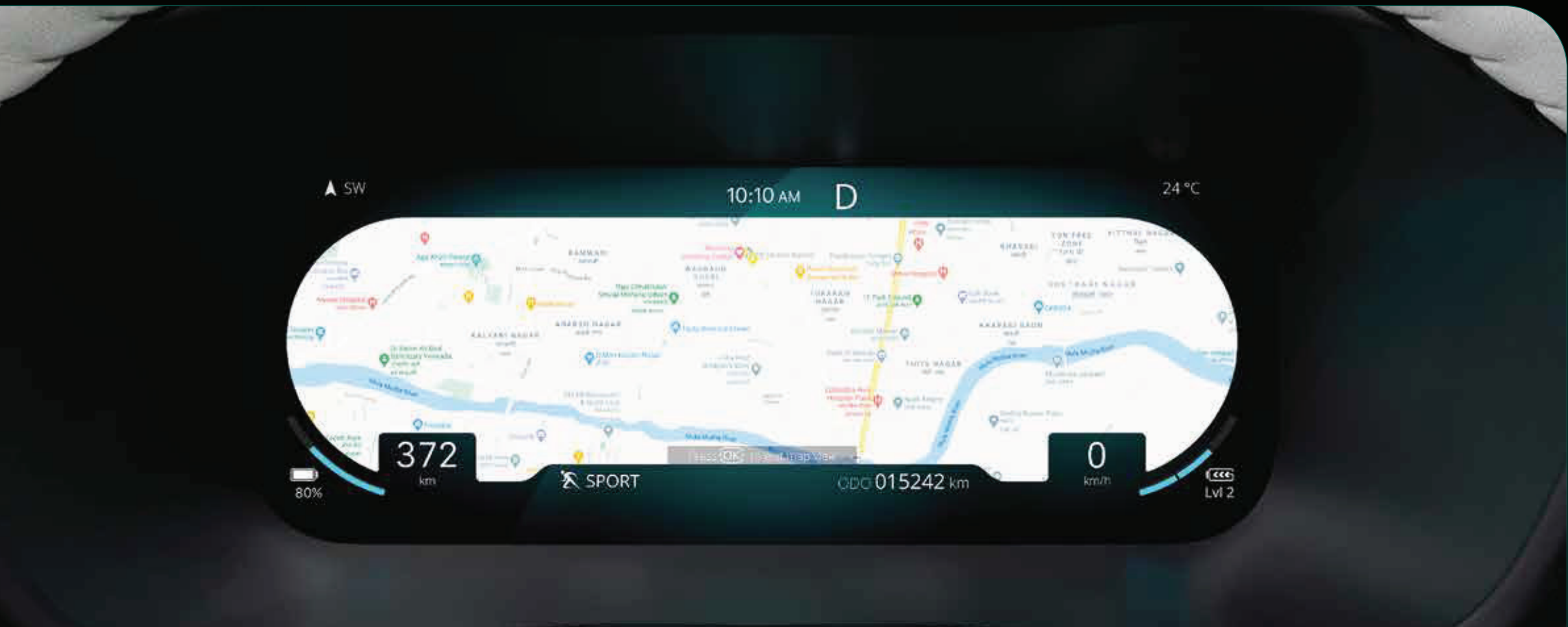


digital cockpit

High-definition fully reconfigurable instrument cluster.



Multi-dial view in cluster.



Embedded maps for a safe, intuitive and enriched driving experience.



wireless charger

Charging with no strings attached.

wireless Android Auto™ and Apple CarPlay™

Be it Android or Apple, connect wirelessly.



air purifier

Breathe pure, drive refreshed.

electronic parking brake

Engage your parking brake with a switch.





auto dimming IRVM

Don't let the lights behind you blind you.



rain sensing wiper

Automatic wipers for unexpected rain showers.

auto headlamps

Automatic headlamps that light up your drives.





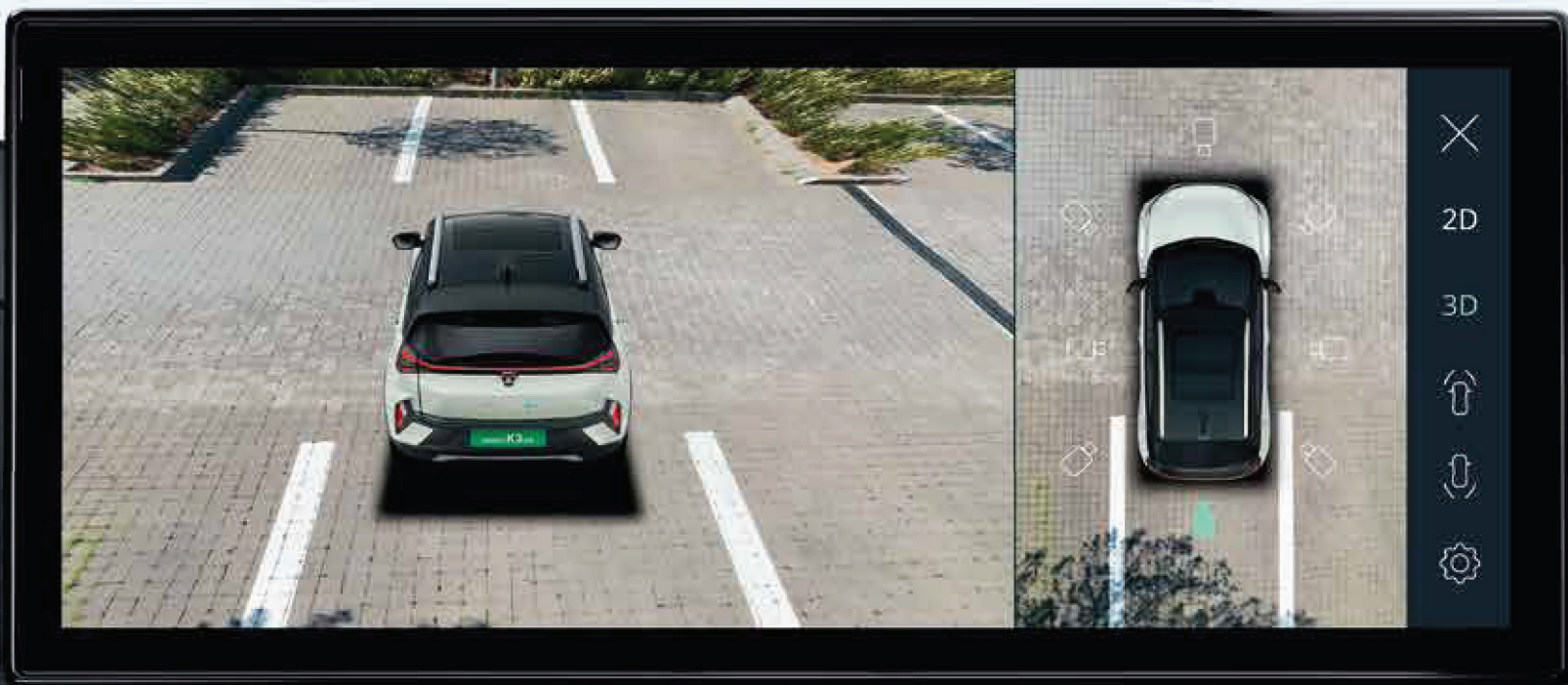
game — changing safety

A new benchmark in safety to keep
your family safe and sound.



fortified cabin

Based on BNCAP 5 star rated platform.



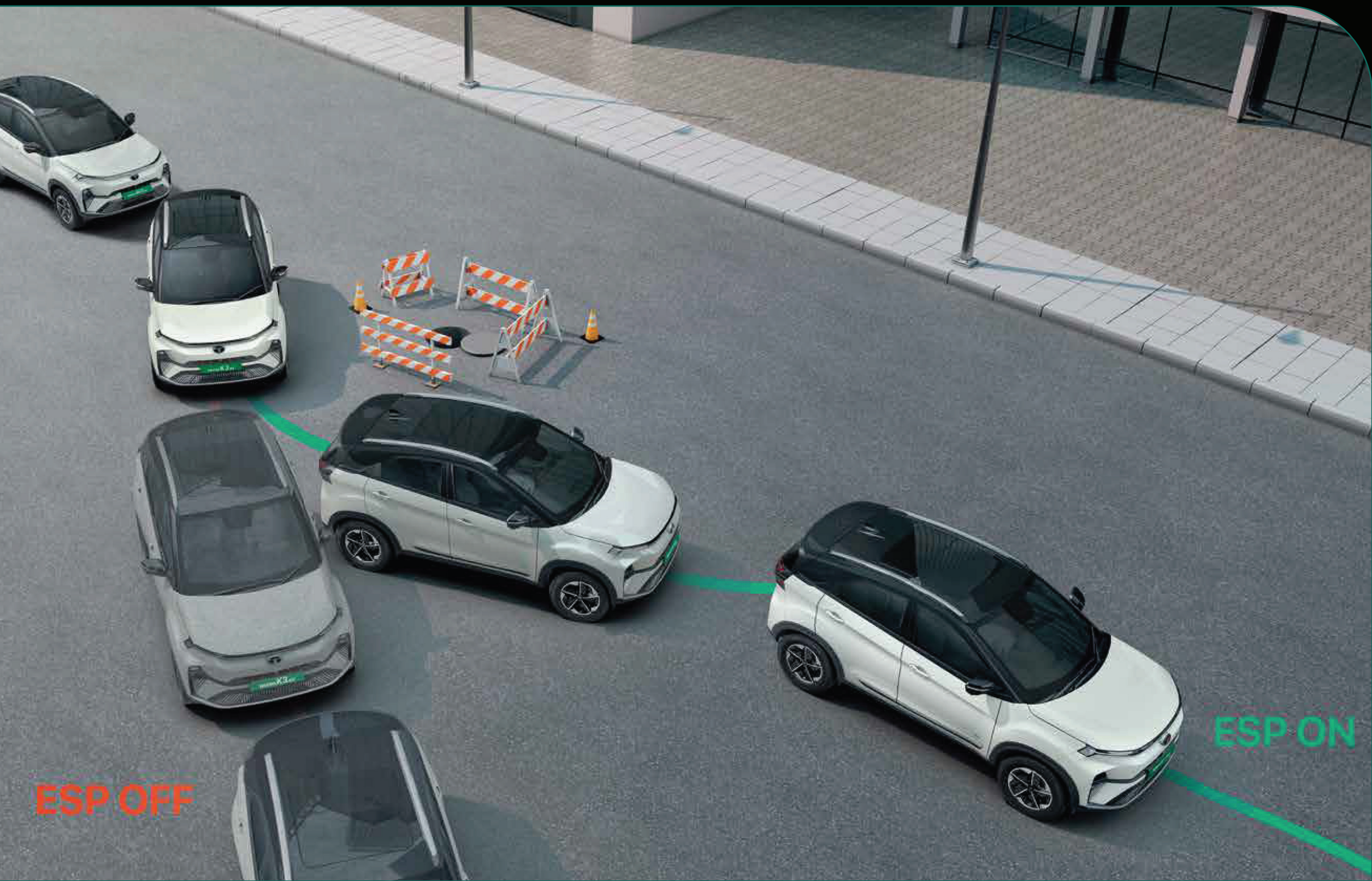
360° surround view camera system

Get a 360° view of everything that surrounds you.



Tyre Pressure Monitoring System (TPMS)

Enjoy the road and the smooth drive while we're monitoring your tyres to keep the good times rolling.

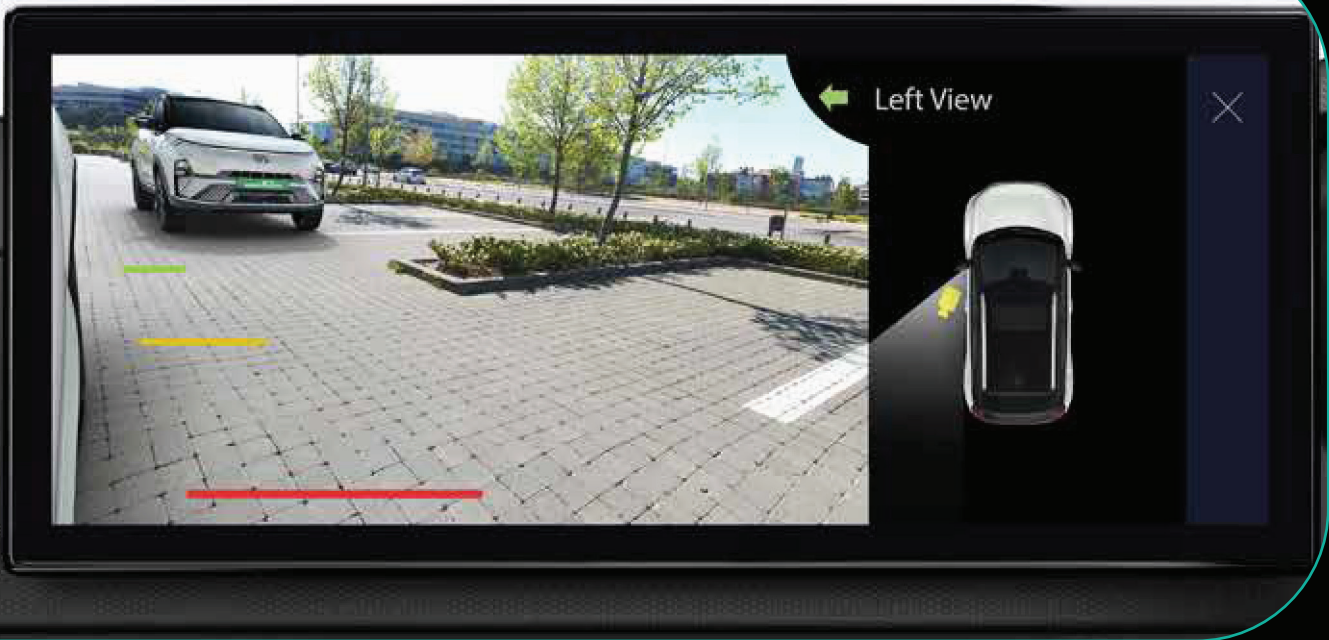


ESP with i-VBAC

Advanced dynamic stability for precise handling.

6 airbags

All-round safety for all-round peace-of-mind.



blind spot view monitor

Additional safety when you need to take a turn.

hill ascent & descent control

Holds for 2 seconds when you stop on an incline and controls your car’s speed on slope declines.



auto hold

Keeps your car at a complete stop until you press the accelerator.



all disc brakes

Increased braking efficiency, for more control.



front parking sensor

Parking made easier with front assist sensors.





game — changing comfort

Slip into a world of plushness & comfort.



voice assisted panoramic sunroof

Enjoy the sky above and set the perfect mood for your journey, all at your command.



frunk

Extra storage, extra style, right under the hood.



bolstered ultra comfort seats with ventilation

Extra cushioned seats for extra comfort on drives.



60:40 rear seats and centre armrest

Customise your comfort and storage.



boot space

Ergonomic boot space to carry everything you need.

rear AC vents

Keep passengers in the back as cool and comfortable as you are.



grand centre console

Let's take some pressure off those long drives.

cooled glove box

For those who like to keep things chill.



USB type C (45W)

Fast charge your gadgets on-the-go.



game — changing performance

Elevate your drives with
gamechanging performance.



paddle shifters

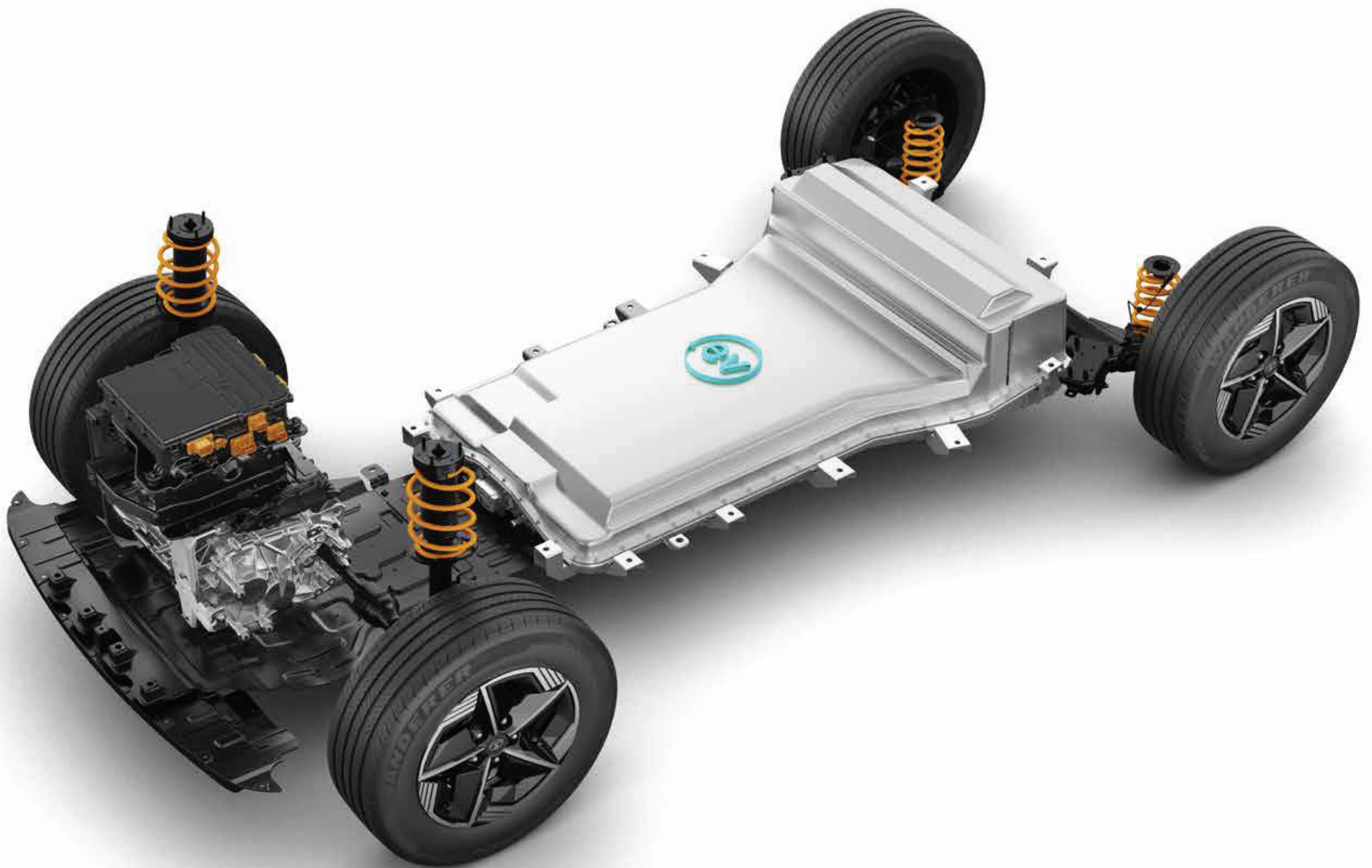
Enjoy intuitive on-the-go energy regen.



multi drive modes - eco, city & sport

Whatever your driving style, we've got you covered.

Nexon K3.ev — architecture



range

Say yes to long drivers! 325* km
(As per extensive in-market testing
in Nepal) a single charge.

power output of 98 kW

Unleash the power of electric.

IP67

Drive worry-free with high ingress
protection standards.

0-100 in 8.9^s

Fast when you need it to be.

instant torque of 215Nm

Instant torque equals instant fun.

— performance

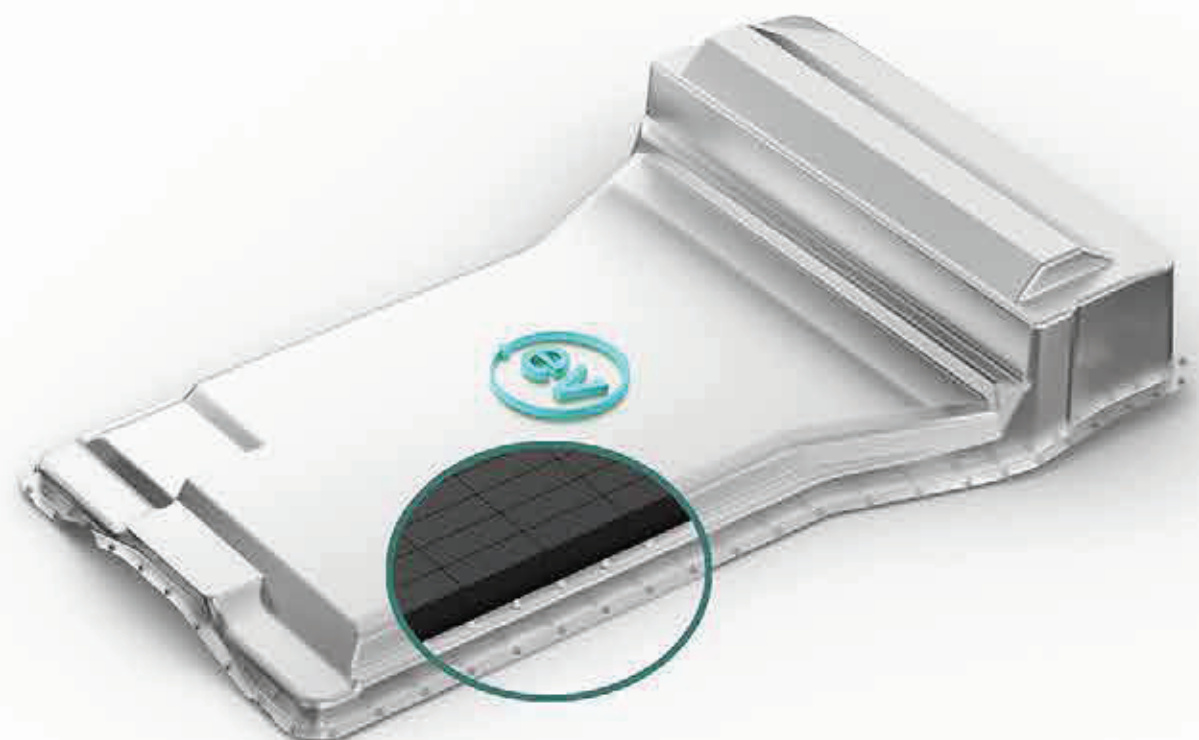


all-new gen-2 motor

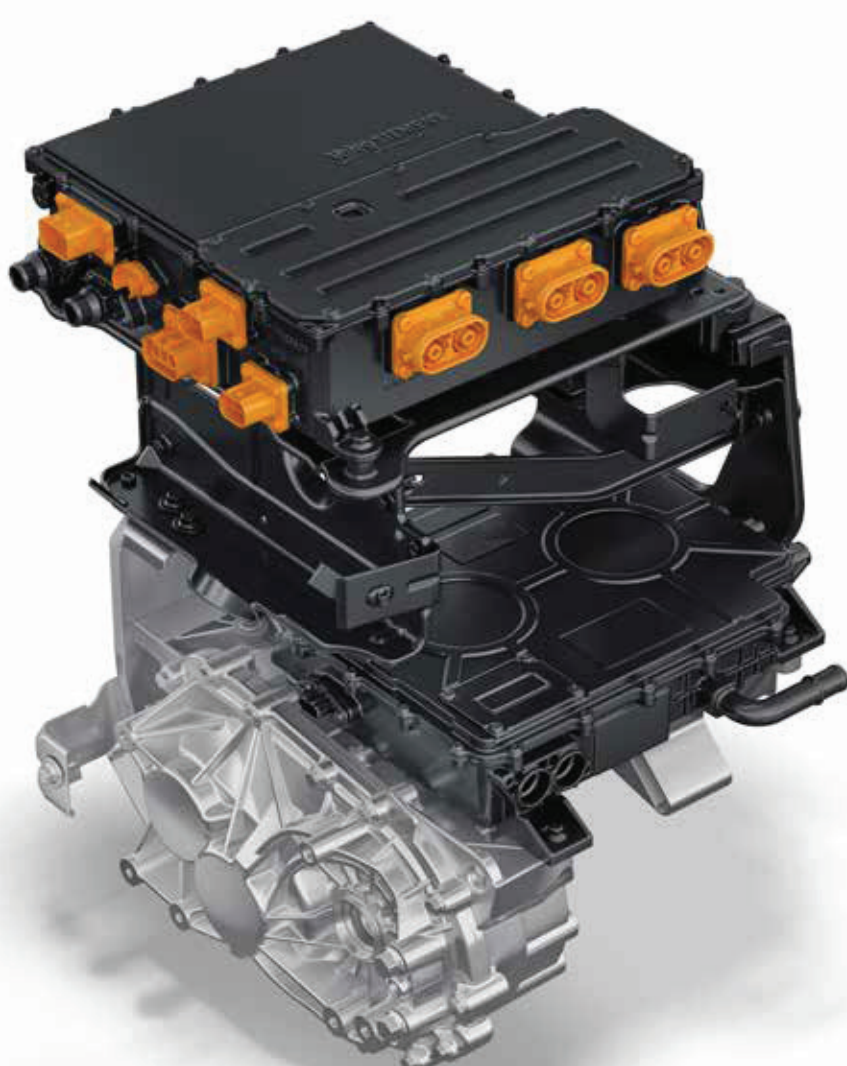
Where performance meets efficiency.

liquid cooled battery pack

Long lasting battery, ideally suited for any driving conditions.



for illustration purposes only



power electronics

Smart algorithms to control vehicle electronics.

charging —

Enjoy hassle-free drives with multiple charging options.



home charging

7.2kW AC home wallbox charger

Charge conveniently at home with AC fast charger.
SOC 10% - 100% in 6 hours 36 minutes* for 45

AC home wallbox charger

Charge efficiently.
SOC 10% - 100% in 17 hours 36 minutes* for 45

on-road charging

DC fast charger

Fast charge (SOC 10% - 80%) with 60kW DC fast charger in just 40 minutes* for 45

15A portable charger

Charge anywhere from a 15A socket, SOC 10% - 100% in 17 hours 36 minutes* for 45

multiple colour choices to pick from

empowered



empowered oxide

pristine white



daytona grey



intensi teal



flame red



nexon K3 .ev - technical specifications and features	
Electric Drivetrain	
Motor (Type)	Permanent magnet synchronous AC motor
Electric motor power (kW)	98
Electric motor torque (Nm)	215
Multi Drive Modes	Multi drive mode - City, Sport & Eco
Battery pack (kWh)	45
Thermal management system	Liquid Cooled system
Ingress protection for motor & battery pack	IP67
Acceleration (0-100 km/h in sec)	8.9^
Emission	Zero tailpipe emission
Smart Drive Features	
Smart Drive Features Smart regenerative braking	Multi-mode regenerative braking 4 Levels (Level 0 - 1 - 2 - 3) 0 - No regen 3 - Max. regen
Paddle Shifters to control Regen Modes	✓
Dimensions	
Length x Width x Height (mm)	3995 × 1802 × 1625
Wheelbase (mm)	2498
Unladen ground clearance (mm)	190
Boot space (Litre)	350
Steering	
Steering	Electrically power assisted
Turning circle radius (m)	5.3
Brakes	
Front, Rear	All - Disc
Suspension	
Front Suspension	Independent MacPherson strut with coil spring
Rear Suspension	Twist beam with dual path Strut
Wheels & Tyres	
Size	215 /60 R16
Low Rolling Resistance Tires	✓
Charging	
Charging Standard	CCS2
Portable charging cable	Yes
Charging options	Home, 3.3 kW AC Wall Box, 7.2 kW AC Wall Box, DC Fast Charger
Estimated regular charging time (SOC 10% to 100% from any 15A plug point)	17 hrs 36 min*
Estimated regular charging time (SOC 10% to 100% from 7.2 kW AC fast charger)	6 hrs 36 min*
Estimated fast charging time (SOC 10%-80%) from 60 kW DC fast charger	40 minutes*
Warranty	
Battery pack and motor warranty	8 Year or 1,60,000 km (whichever is earlier)
Vehicle warranty	3 Year or 1,25,000 km (whichever is earlier)
Driving range	
Certified full charge range as per MIDC Part 1 + Part 2 (km)	490#
Range (km)	325*

Exterior

- LED Projector Auto Headlamps
- Smart Digital DRLs with Welcome & Goodbye Sequence
- Centre Position Lamp
- Front Fog Lamps with Cornering
- R16 Alloy Wheels with Aero Inserts
- Smart Digital X Factor
- Hidden Rear Wiper & Washer with Defogger
- Sequential Indicators
- Roof Rails

Interior

- Leatherette seats
- Leatherette Wrapped Steering Wheel
- Smart Digital Steering Wheel
- Smart Digital Shifter
- Physital Control Panel

Comfort and Convenience

- Voice Assisted Panoramic Sunroof
- Driver & Co-driver Ventilated Seats
- Wireless Smartphone Charger
- Push Button Start (PEPS)
- Fully Automatic Climate Control (FATC)
- Multi Drive Modes - Eco, City & Sport
- Frunk
- V2V^{^^^} Charging
- V2L^{***} Technology
- Air purifier with AQI sensor & display
- Cruise Control
- Paddle Shifter for Regen Modes
- Rain Sensing Wipers
- Power Window (4 doors)- Driver One Touch Auto Up/ Down
- Electric Tailgate Release
- Driver side Height Adjustable Seat
- Electric ORVM with Autofold
- Front & Rear Fast Charge C Type 45W
- Rear AC Vents
- Cooled & Illuminated Glove Box
- Express Cooling
- Front Armrest
- Auto Dimming IRVM
- Rear Seat 60:40 Split
- Rear Seat Central Armrest
- Charging Indicator in Front Centre Position Lamp
- Spare wheel

Infotainment

- 31.24 cm (12.3 in) Cinematic Touchscreen
- 9 Speaker JBL Cinematic Sound System (4 Speakers + 4 Tweeters + 1 Subwoofer)
- 26.03 cm (10.3 in) Digital Cockpit with Navigation (Driver View Map)
- Wireless Android AutoTM & Apple CarPlayTM
- AudioworX – JBL Audio Modes
- Multiple Voice Assistants (Hey Tata, Siri, Google Assistant)

Safety

- 6 Airbags
- 360 deg Camera Surround View System
- Blind Spot View Monitor
- Front Parking Sensor
- Tire Pressure Monitoring System
- Rear Disc Brakes
- Electronic Parking Brake with Autohold
- Hill Accent & Decent Control
- Anti Lock Braking System (ABS)
- Electronic Brake Force Distribution (EBD)
- Electronic Stability Program (ESP) with i-VBAC
- Cornering Stability Control (CSC)
- Electronic Traction Control (ETC)
- Roll Over Mitigation (ROM)
- Brake Disc Wiping (BDW)
- Electronic Brake Pre-fill (EBP)
- Hydraulic Brake Assist (HBA)
- Hydraulic Fading Compensation(HFC)
- Dynamic Wheel Torque By Brake (DWT-B)
- Hill Hold Control (HHC)
- Panic Brake Alert (PBA)
- After Impact Braking (AIB)

empowered + 45

addition to empowered 45

- Voice Assisted Panoramic Sunroof
- Frunk
- 31.24 cm Cinematic Touchscreen
- SOS call
- V2V^{^^} Charging
- V2L^{***} Technology
- Welcome & Goodbye Sequence in
- Front & rear DRLs

- Charging Indicator in Front Centre
- Position Lamp
- Driver & Co-driver Ventilated Seats
- Air purifier with AQI sensor & display
- JBL Cinematic Sound System
- (4 Speakers + 4 Tweeters + 1Subwoofer)
- Arcade.ev – App Suite
- 7.2 kW AC Fast Charger